

**BARBER DIME  
RPM  
COMPILATION  
FILES**

**By Dr. Brian Allen  
© 2024**

## TABLE OF CONTENTS

### BARBER DIMES

1892-O/O RPM-001 (original RPM Book).....	3
1892-O/O RPM-002 .....	4
1893-O/O RPM-001 .....	?
1893-S/S RPM-001 WRPM-001 FS-501.....	5
1893-S/S RPM-002 (not listed elsewhere).....	6
1895-S/S WRPM-001.....	7
1899-O/O RPM-001 FS-501 (removed from CPG) .....	8
1899-S/S WRPM-001.....	9
1901-O/Horizontal O RPM-001 FS-501.....	10
1905-S/S RPM-001 WRPM-001 .....	?
1905-O/O FS-501 (NO cross-references).....	11
1906-D/D RPM-001 .....	12
1906-D/D RPM / RPD / FS-301 .....	13
1906-D/D RPM / RPD / FS-302.....	13
1906-S/S RPM / RPD / FS-301.....	14
1907-D/D RPM-001 .....	15
1907-S/S RPM-001.....	16
1907-O/O RPM-001 FS-501.....	17
1908-D/D WRPM-001.....	18
1911-D/D RPM-001 .....	19
1911-D/D RPM-002 WRPM-001.....	20
1911-D/D RPM-003 WRPM-002.....	21
1911-D/D WRPM-002 (? RPM-001).....	22
1911-D/D Questionable RPM#1 .....	23
1911-D/D Questionable RPM#2 .....	23
1912-D/D RPM-001 WRPM-001 FS-501 .....	24
1912-D/D RPM-002 .....	25
1912-S/S RPM-001 .....	26
1914-D/D RPM-001 .....	27
1914-D/D RPM-002 WRPM-002.....	28
1914-D/D RPM-003 .....	29
1914-DD RPM-004.....	30
1914-D/D RPM-005.....	31
1914-D/D RPM-006 WRPM-001.....	32
1914-D/D RPM-007.....	33
1915-S/S RPM-001 / WRPM-001 .....	34

## Bibliography

*The RPM Book, A Comprehensive Listing & Price Guide to Repunched Mint Marks & Over Mint Marks.* John A. Wexler & Tom Miller, May 1983

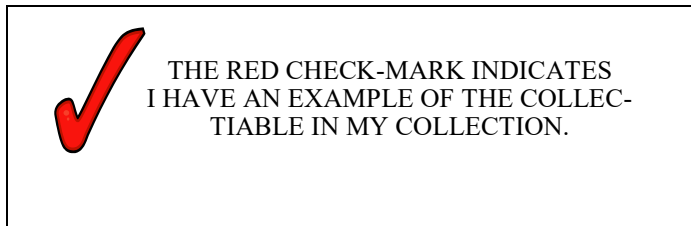
Variety Vista, [www.varietysta.com](http://www.varietysta.com), 2024

John Wexler Doubled Die.com, [www.doubledie.com](http://www.doubledie.com), 2024.

Cherrypickers' Guide, Fourth Edition Volume II; Fivaz and Stanton, Whitman Publishing, LLC 2006.

CoinFacts; [www.pcg.com](http://www.pcg.com), 2024

Bibliography.....35



## 1915-S/S RPM-001 *Northeast*

**Cross-Reference:** RPM-001, WRPM-001, FS-501

**Obverse Markers:** Unknown

**Reverse Markers:** Unknown

**Value:** G4    VG    F    VF    XF    AU    UNC  
           \$20   \$24   \$45   \$60   \$95   \$150   \$250

*Italics are estimated values.*

Known sales: L&C Coin VG \$24 , 7/21/2024



*Images from Dr. Brian Allen Collection*

## 1892-O/O RPM-001 *North*

**Cross-Reference:** RPM-001

**Obverse Markers:** Remnants of die clash between back of neck and ribbon, clash through lower letters of STATES, light diagonal die crack off point of bust and back of neck

**Reverse Markers:** Unknown

**Value:** G4    VG    F    VF    XF    AU    UNC  
           \$25   \$30   \$50   \$75   \$100   \$150   \$245.00

*Italics are estimated values.*

Known Sale: UNC Raw \$245.00—ebay 8/1/2024



*Images from Dr. Brian Allen Collection*

## 1892-O/O RPM-002 *Southwest*

---

**Cross-Reference:** RPM-002

**Obverse Markers:** Unknown

**Reverse Markers:** Die crack from rim to left wheat at K-9

**Value:** G4    VG    F    VF    XF    AU    UNC  
          \$25   \$30   \$50   \$75   \$100   \$150   \$225  
*Italics are estimated values.*

Known sales: Unknown



*Images from Variety Vista*

## 1914-D/D RPM-007 *South*

---

**Cross-Reference:** RPM-007

**Obverse Markers:** Unknown

**Reverse Markers:** Unknown

**Value:** G4    VG    F    VF    XF    AU    UNC  
          \$20   \$28-   \$35   \$44   \$50   \$100   \$230  
*Italics are estimated values.*

Known sales: eBay VF \$44, 7/21/2024



*Images from Dr. Brian Allen Collection*

## 1914-D/D RPM-006

---

**Cross-Reference:** RPM-006, WRPM-003

**Obverse Markers:** Unknown

**Reverse Markers:** Unknown

**Value:** G4    VG    F    VF    XF    AU    UNC  
          \$20    \$28-    \$35    \$50    \$50    \$100    \$230

*Italics are estimated values.*

Known sales: eBay 7/25/2024 VF \$50



*Images from Dr. Brian Allen Collection*

## 1893-S/S RPM-001 *East*

---

**Cross-Reference:** RPM-001, WRPM-001, FS-501

**Obverse Markers:** Unknown

**Reverse Markers:** Unknown

**Value:** G4    VG    F    VF    XF    AU    UNC  
          \$40    \$50    \$70    \$100    \$225    \$285    \$500-\$1K

Known sales: Numerous / PCGS Price Guide



*Images from Dr. Brian Allen Collection*

## 1893-S/S RPM-002 *East*

**Cross-Reference:** RPM-002 Old RPM Book '83

**Obverse Markers:** Unknown

**Reverse Markers:** Unknown

**Value:** G4 VG F VF XF AU UNC  
\$25 \$40 \$55 \$80 \$175 \$220 \$400-\$800

*Italics are estimated values.*

Known sales: L&C Coin 7/21/2024 Fine—\$55



*Images from Dr. Brian Allen Collection*

## 1914-D/D RPM-005

**Cross-Reference:** RPM-005

**Obverse Markers:** Unknown

**Reverse Markers:** Unknown

**Value:** G4 VG F VF XF AU UNC  
\$20 \$28- \$35 \$44 \$50 \$100 \$230

*Italics are estimated values.*

Known sales: L&C Coin 7/21/2024, VF \$27



*Images from Dr. Brian Allen Collection*

## 1914-D/D RPM-004 *West*

---

**Cross-Reference:** RPM-004

**Obverse Markers:** Unknown

**Reverse Markers:** Unknown

<b><i>Value:</i></b>	G4	VG	F	VF	XF	AU	UNC
	\$20	\$28-	\$35	\$44	\$50	\$100	\$230

*Italics are estimated values.*

Known sales: L&C Coin VF 7/21/2024 \$30



*Images from Dr. Brian Allen Collection*

## 1895-S/S WRPM-001 *West*

---

**Cross-Reference:** Unknown

**Obverse Markers:** Unknown

**Reverse Markers:** Unknown

<b><i>Value:</i></b>	G4	VG	F	VF	XF	AU	UNC
	\$70	\$100	\$130	\$150	\$175	\$250	\$400

*Italics are estimated values.*

Known sales: Unknown



*Images from [www.doubledddie.com](http://www.doubledddie.com)*

## 1899-O/O RPM-001 *West*

**Cross-Reference:** RPM-001, WRPM-001, FS-501

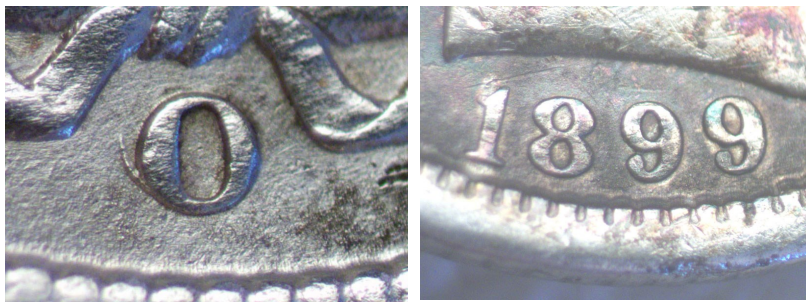
**Obverse Markers:** Unknown

**Reverse Markers:** Unknown

<b>Value:</b> G4	VG	F	VF	XF	AU	UNC
<i>\$30</i>	<i>\$40</i>	<i>\$75</i>	<i>\$150</i>	<i>\$225</i>	<i>\$300</i>	<i>\$450</i>

*Italics are estimated values.*

Known sales: eBay 7/21/2024 VF-Cleaned \$90



*Images from Dr. Brian Allen Collection*

## 1914-D/D RPM-003 *West*

**Cross-Reference:** RPM-003

**Obverse Markers:** Unknown

**Reverse Markers:** Unknown

<b>Value:</b> G4	VG	F	VF	XF	AU	UNC
<i>\$20</i>	<i>\$28-</i>	<i>\$35</i>	<i>\$44</i>	<i>\$50</i>	<i>\$100</i>	<i>\$230</i>

*Italics are estimated values.*

Known sales: L&C Coin 7/21/2024, XF \$42



*Images from Dr. Brian Allen Collection*



## 1914-D/D RPM-002

---

**Cross-Reference:** RPM-002

**Obverse Markers:** Unknown

**Reverse Markers:** Unknown

<b>Value:</b> G4	VG	F	VF	XF	AU	UNC
\$20	\$28-	\$35	\$44	\$50	\$100	\$230

*Italics are estimated values.*

Known sales: L&C Coin 7/21/2024, VF \$27



*Images from Dr. Brian Allen Collection*

## 1899-S/S WRPM-001 *East*

---

**Cross-Reference:** None

**Obverse Markers:** Unknown

**Reverse Markers:** Unknown

<b>Value:</b> G4	VG	F	VF	XF	AU	UNC
\$25	\$30	\$50	\$70	\$90	\$135	\$375

*Italics are estimated values.*

Known sales: Unknown



*Image from [www.doubledie.com](http://www.doubledie.com)*

## 1901-O/Horizontal O

**Cross-Reference:** RPM-001, FS-501

**Obverse Markers:** Unknown

**Reverse Markers:** Unknown

<b>Value:</b> G4	VG	F	VF	XF	AU	UNC
\$25	\$60	\$140	\$225	\$400	\$500	\$900-\$1500

Known sales: eBay 7/20/2024 Good \$25



*Images from Dr. Brian Allen Collection*

## 1914-D/D RPM-001 *Northeast*

**Cross-Reference:** RPM-001, WRPM-001

**Obverse Markers:** Unknown

**Reverse Markers:** Unknown

<b>Value:</b> G4	VG	F	VF	XF	AU	UNC
\$20	\$28-	\$35	\$44	\$50	\$100	\$230

*Italics are estimated values.*

Known sales: L&C Coin 7/21/2024, Fine \$40



*Images from Dr. Brian Allen Collection*

## 1912-S/S RPM-001 *East*

---

**Cross-Reference:** Unknown

**Obverse Markers:** Unknown

**Reverse Markers:** Unknown

***Value:*** G4    VG    F    VF    XF    AU    UNC  
          \$20   \$30   \$40   \$50   \$75   \$120   \$250

*Italics are estimated values.*

Known sales: L&C Coin \$120 AU Raw 7/21/2024



*Images from Dr. Brian Allen Collection*

## 1905-S/S RPM-001 *West*

---

**Cross-Reference:** RPM-001, WRPM-001

**Obverse Markers:** Unknown

**Reverse Markers:** Unknown

***Value:*** G4    VG    F    VF    XF    AU    UNC  
          \$20   \$30   \$35   \$40   \$75   \$90   \$200

*Italics are estimated values.*

Known sales: eBay AU \$60



*Images from Dr. Brian Allen Collection*

## 1906-D/D RPM-001 / RPD

---

**Cross-Reference:** RPM-001, Unlisted RPD

**Obverse Markers:** Unknown

**Reverse Markers:** Unknown

<b>Value:</b> G4	VG	F	VF	XF	AU	UNC
\$20	\$25	\$30	\$40	\$75	\$140	\$250

*Italics are estimated values.*

Known sales: Unknown



*Images from [www.varietyvista.com](http://www.varietyvista.com)*

## 1912-D/D RPM-002 North

---

**Cross-Reference:** Unknown

**Obverse Markers:** Unknown

**Reverse Markers:** Unknown

<b>Value:</b> G4	VG	F	VF	XF	AU	UNC
\$20	\$30	\$40	\$50	\$60	\$95	\$150

*Italics are estimated values.*

Known sales: L&C Coin \$95 AU Raw 7/21/2024



*Images from Dr. Brian Allen Collection*

## 1912-D/D RPM-001 *North*

**Cross-Reference:** RPM-001, WRPM-001, FS-501

**Obverse Markers:** Unknown

**Reverse Markers:** Unknown

**Value:** G4 VG F VF XF AU UNC  
 \$40 \$90 \$105 \$120 \$130 \$150 \$250

*Italics are estimated values.*

Known sales: eBay PCGS VG-10 \$89.75 7/21/2024



*Images from Dr. Brian Allen Collection*

## 1906-D/D RPM/ RPD / FS-301

**1906-D**

**FS-10-1906D-301 (10c-010.088)**

**Variety:** RPD and RPM

**Lawrence—N/L**

**PUP:** Date, Mintmark

**URS-4 · I-3 · L-3**



**Description:** Several secondary numbers are evident in various directions. A secondary 1 is visible west of the primary, a secondary 9 slightly north, a barely evident secondary 0 far south, and a secondary 6 west within the loop of the primary 6. The secondary D mintmark is evident east of the primary D.

	VG-8	F-12	VF-20	EF-40	AU-50	AU-55	MS-60
<b>VARIETY:</b>	\$20	\$30	\$40	\$60	\$100	\$125	\$200
<b>NORMAL:</b>	\$4	\$7	\$12	\$26	\$63	\$78	\$150

**Comments:** This may become a very popular variety.

**1906-D**

**FS-10-1906D-302 (10c-010.089)**

**Variety:** RPD and RPM

**Lawrence—N/L**

**PUP:** Date, Mintmark

**URS-4 · I-3 · L-3**



**Description:** This variety is similar to the previous listing, but differs in several aspects. The secondary date digits are visible very slightly south on all digits. The lower right side of the secondary D mintmark is evident east and slightly north of the primary D.

	VG-8	F-12	VF-20	EF-40	AU-50	AU-55	MS-60
<b>VARIETY:</b>	\$20	\$30	\$40	\$60	\$100	\$125	\$200
<b>NORMAL:</b>	\$4	\$7	\$12	\$26	\$63	\$78	\$150

**Comments:** As with the previous listing, this may prove to be a very popular variety.

*Images from Cherrypickers Guide*

## 1906-S/S RPM / RPD / FS-301

THE CHERRY-PICKERS' GUIDE • BARBER OR LIBERTY HEAD DIMES, 1892-1916

**1906-S**

**FS-10-1906S-301**

Variety: RPD and RPM

PUP: Date, Mintmark

URS-4 · I-3 · L-3

Attribution: Lawrence—N/L



**Description:** A secondary digit is evident within the lower loop of the 9 and within the upper loop of the 6. The earlier die states show a secondary S north of the primary S, indicating that there may have been more than one repunched S.

	VG-8	F-12	VF-20	EF-40	AU-50	AU-55	MS-60
VARIETY:	\$20	\$30	\$40	\$75	\$125	\$150	\$275
NORMAL:	\$5	\$9	\$14	\$36	\$80	\$125	\$192

**Comments:** This is certainly a variety worth searching for.

*Images from Cherrypickers Guide*

## 1911-D/D Unlisted RPM

**Cross-Reference:** Questionable RPM

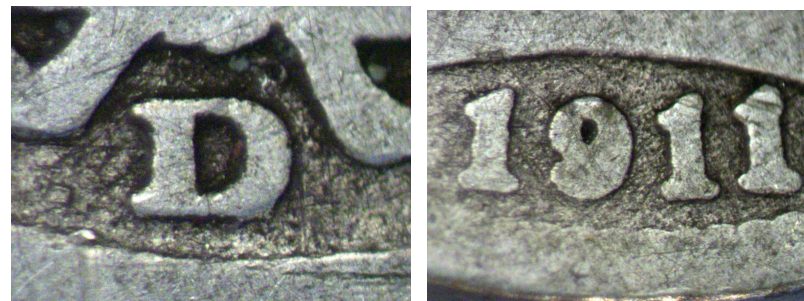
**Obverse Markers:** Unknown

**Reverse Markers:** Unknown

**Value:** G4 VG F VF XF AU UNC

*Italics are estimated values.*

Known sales: Unknown



*Images from Dr. Brian Allen Collection*

## 1911-D/D Unlisted RPM

**Cross-Reference:** Questionable RPM

**Obverse Markers:** Unknown

**Reverse Markers:** Unknown

**Value:** G4 VG F VF XF AU UNC

*Italics are estimated values.*

Known sales: eBa7y, 8/3/2024; \$4.99



*Images from Dr. Brian Allen Collection*

## 1911-D/D RPM-004 *North*

---

**Cross-Reference:** WRPM-003, ? RPM-001

**Obverse Markers:** Unknown

**Reverse Markers:** Unknown

<b><i>Value:</i></b> G4	VG	F	VF	XF	AU	UNC
<i>\$20</i>	<i>\$35</i>	<i>\$45</i>	<i>\$60</i>	<i>\$80</i>	<i>\$110</i>	<i>\$250</i>

*Italics are estimated values.*

Known sales: Unknown



*Image from [www.doubledddie.com](http://www.doubledddie.com)*

## 1907-D/D RPM-001 / *RPD*

---

**Cross-Reference:** RPM-001, RPD

**Obverse Markers:** Unknown

**Reverse Markers:** Unknown

<b><i>Value:</i></b> G4	VG	F	VF	XF	AU	UNC
<i>\$20</i>	<i>\$25</i>	<i>\$30</i>	<i>\$40</i>	<i>\$75</i>	<i>\$140</i>	<i>\$250</i>

*Italics are estimated values.*

Known sales: Unknown



*Images from [www.varietyvista.com](http://www.varietyvista.com)*

## 1907-S/S RPM-001 *East*

---

**Cross-Reference:** RPM-001

**Obverse Markers:** Unknown

**Reverse Markers:** Unknown

<b>Value:</b> G4	VG	F	VF	XF	AU	UNC
\$20	\$25	\$30	\$40	\$75	\$140	\$250

*Italics are estimated values.*

Known sales: Unknown



*Images from [www.varietyvista.com](http://www.varietyvista.com)*

## 1911-D/D RPM-003 *North*

---

**Cross-Reference:** RPM-003

**Obverse Markers:** Unknown

**Reverse Markers:** Unknown

<b>Value:</b> G4	VG	F	VF	XF	AU	UNC
\$20	\$35	\$45	\$60	\$80	\$110	\$250

*Italics are estimated values.*

Known sales: Unknown



*Images from [www.varietyvista.com](http://www.varietyvista.com)*



## 1911-D/D RPM-002 *North*

**Cross-Reference:** RPM-002, WRPM-001

**Obverse Markers:** Unknown

**Reverse Markers:** Unknown

**Value:** G4    VG    F    VF    XF    AU    UNC  
           \$20   \$35   \$45   \$60   \$80   \$110   \$250  
*Italics are estimated values.*

Known sales: Unknown



*Image from [www.doubleddie.com](http://www.doubleddie.com)*

## 1907-O/O FS-501 *South*

**1907-O**

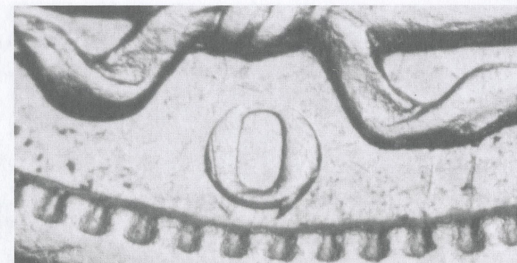
**FS-10-1907o-501**

Variety: Repunched Mintmark

PUP: Mintmark

URS-6 · I-3 · L-3

Lawrence—N/L



**Description:** The weaker O mintmark is evident south of the primary mintmark.

	VG-8	F-12	VF-20	EF-40	AU-50	AU-55	MS-60
<b>VARIETY:</b>	\$25	\$45	\$65	\$90	\$125	\$175	\$225
<b>NORMAL:</b>	\$6	\$25	\$37	\$45	\$70	\$110	\$167

**Comments:** This is a very collectible variety!

*Images from Cherrypickers Guide*

## 1908-D/D WRPM-001

---

**Cross-Reference:** Unknown

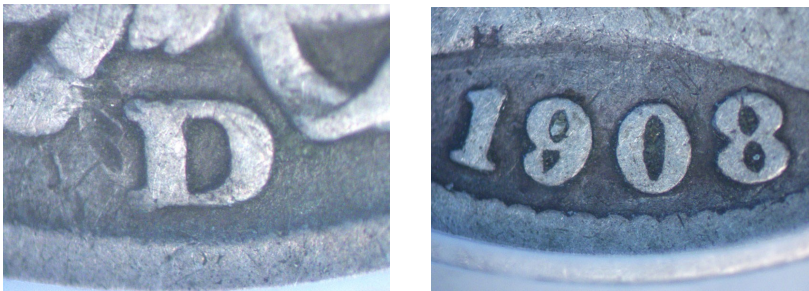
**Obverse Markers:** Unknown

**Reverse Markers:** Unknown

<b>Value:</b> G4	VG	F	VF	XF	AU	UNC
\$25	\$30	\$40	\$65	\$80	\$100	\$175

*Italics are estimated values.*

Known sales: Unknown



*Images from Dr. Brian Allen Collection*

## 1911-D/D RPM-001

---

**Cross-Reference:** RPM-001, ? WRPM-002

**Obverse Markers:** Unknown

**Reverse Markers:** Unknown

<b>Value:</b> G4	VG	F	VF	XF	AU	UNC
\$20	\$35	\$45	\$60	\$80	\$110	\$250

*Italics are estimated values.*

Known sales: Unknown



*Images from [www.varietyvista.com](http://www.varietyvista.com)*